

# The Role of Rivers Agency in the Planning Process

**John Moore**

**Planning Advisory Unit**

**Rivers Agency**



Department of  
**Agriculture and  
Rural Development**

[www.dardni.gov.uk](http://www.dardni.gov.uk)

AN ROINN  
Talmhaíochta agus  
Forbartha Tuaithe

MANNYSTRIE O  
Fairs an  
Kintra Fordèrin



# Introduction to Rivers Agency

## We are:

A division of the Department of Agriculture and Rural Development.  
The statutory drainage and flood defence authority for Northern Ireland.

## Our vision:

To manage flood risk to facilitate the social, economic and environmental development of Northern Ireland.

## Our aims:

To reduce the risk to life and damage to property from flooding from rivers & the sea.  
To undertake watercourse and coastal flood management in a sustainable manner.



Department of  
**Agriculture and  
Rural Development**

[www.dardni.gov.uk](http://www.dardni.gov.uk)

AN ROINN  
Talmhaíochta agus  
Forbartha Tuaithe

MANNYSTRIE O  
Fairms an  
Kintra Fordèrin



# A few words about flooding....

- **Natural phenomena**
- **Part of the natural life cycle of a river & the sea**
- **Flooding cannot entirely be avoided**

**But we can manage the risks**



Department of  
**Agriculture and  
Rural Development**

[www.dardni.gov.uk](http://www.dardni.gov.uk)

AN ROINN  
Talmhaíochta agus  
Forbartha Tuaithe

MINISTRE O  
Fairs an  
Kintra Fordèrin



# Flood Risk Management

## Protection

Flood Alleviation Schemes

## Preparedness

Flood Warning

Flood Emergency Response

Flood Proofing

Flood Risk Communication

## Prevention

Land Use Planning



Department of  
**Agriculture and  
Rural Development**

[www.dardni.gov.uk](http://www.dardni.gov.uk)

AN ROINN  
Talmhaíochta agus  
Forbartha Tuaithe

MANNISTRIE O  
Fairs an  
Kintra Fordèrin



# Flood Prevention

The primary means of avoiding and reducing flood risk to and from new development



Department of  
**Agriculture and  
Rural Development**

[www.dardni.gov.uk](http://www.dardni.gov.uk)

AN ROINN  
**Talmhaíochta agus  
Forbartha Tuaithe**

MANNYSTRIE O  
**Fairs an  
Kintra Fordèrin**

# Development Control - individual planning applications

**We are the interface between Rivers Agency and the Planning Authority.**

**We advise on any development where there is a potential flood risk to:**

- **The proposed development.**
- **Property elsewhere caused by the proposed development.**



Department of  
**Agriculture and  
Rural Development**

[www.dardni.gov.uk](http://www.dardni.gov.uk)

AN ROINN  
Talmhaíochta agus  
Forbartha Tuaithe

MINISTÈRE O  
Fairs an  
Kintra Fordèrin



# Area Development Plans

Rivers Agency is a Consultee.

We provide advice on the suitability of land for development with respect to flood risk.

- **Extent of flood risk**
- **Mitigation of flood risk.**
- **Sustainable drainage systems.**
- **Resistance measures against flooding.**
- **Resilience measures to reduce the impact after flooding occurs.**



Department of  
**Agriculture and  
Rural Development**

[www.dardni.gov.uk](http://www.dardni.gov.uk)

AN ROINN  
Talmhaíochta agus  
Forbartha Tuaithe

MANNYSTRIE O  
Fairs an  
Kintra Fordèrin



# Basis of Our Advice

**Policy - PPS 15 Planning & Flood Risk**

**Information - Flood Maps**



Department of  
**Agriculture and  
Rural Development**

[www.dardni.gov.uk](http://www.dardni.gov.uk)

AN ROINN  
Talmhaíochta agus  
Forbartha Tuaithe

MANNYSTRIE O  
Fairs an  
Kintra Fordèrin





# Planning Policy Statement 15: Planning and Flood Risk

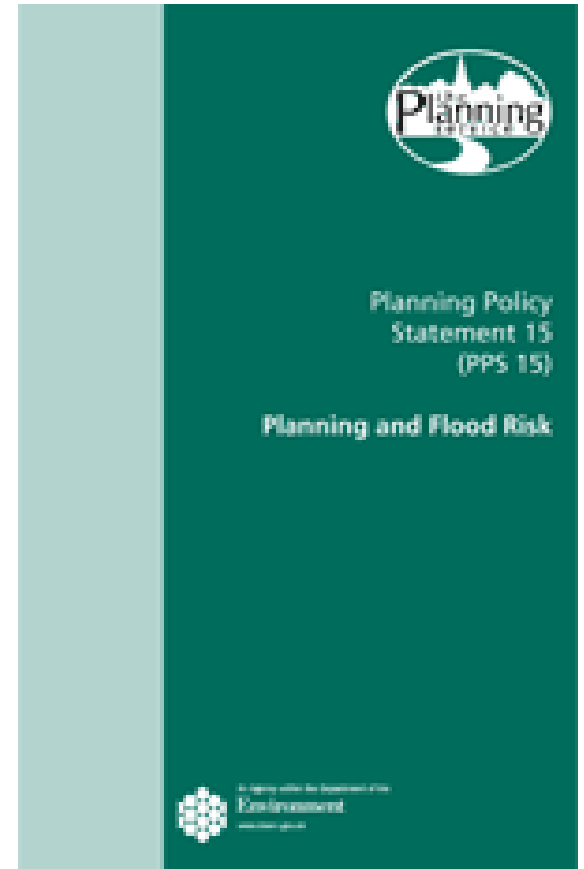
Introduced in 2006 & just reviewed.

## Aim of PPS 15:

**To prevent inappropriate development in areas known to be at risk of flooding, or that may increase flood risk elsewhere.**

## Key Principle of PPS 15:

A precautionary approach to flooding.



# Planning Policy Statement 15 Planning and Flood Risk

## 5 key policies

**Dealing with flooding:**

**Rivers.**

**Coastal.**

**Surface water.**

**Reservoirs.**

**Protection of drainage infrastructure.**

## PPS 15 is Planning NI policy

**As experts, your planning staff assisted by us, will make decisions based on PPS 15.**



Department of  
**Agriculture and  
Rural Development**

[www.dardni.gov.uk](http://www.dardni.gov.uk)

AN ROINN  
Talmhaíochta agus  
Forbartha Tuaithe

MANNYSTRIE O  
Fairs an  
Kintra Fordèrin



# Rivers Agency Flood Maps

## Why

- To meet requirements of the Floods Directive.
- Provide information for those at risk to make informed decisions – public, developers, government.
- A primary tool in the planning consultation process.

## What

- Predictive coastal, river and surface water flooding:
  - Extents.
  - Flood levels.
- Historical flood events
  - Extents.
  - Photographs.
  - Properties affected.



Department of  
**Agriculture and  
Rural Development**

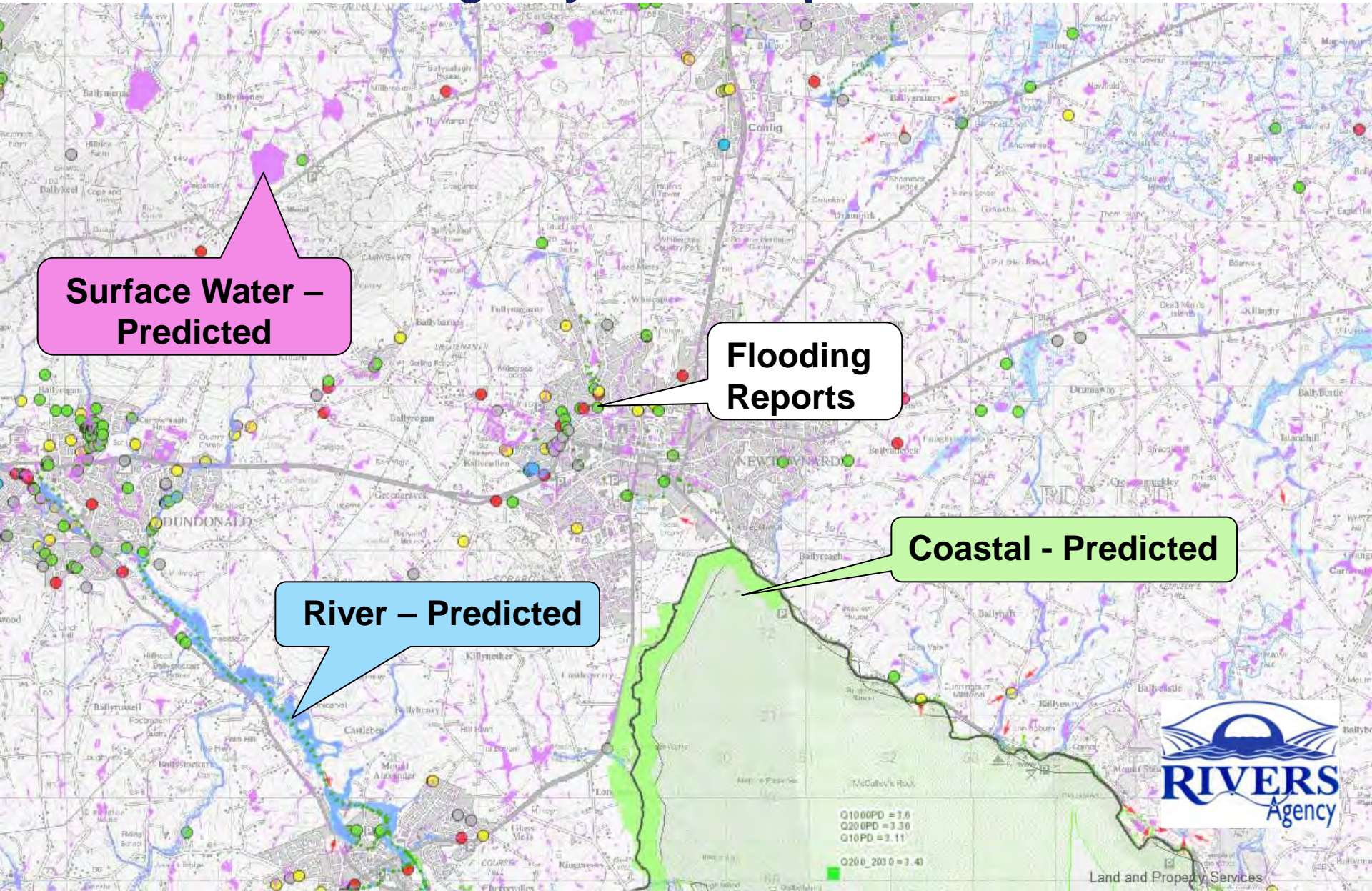
[www.dardni.gov.uk](http://www.dardni.gov.uk)

AN ROINN  
Talmhaíochta agus  
Forbartha Tuaithe

MANNYSTRIE O  
Fairs an  
Kintra Fordèrin



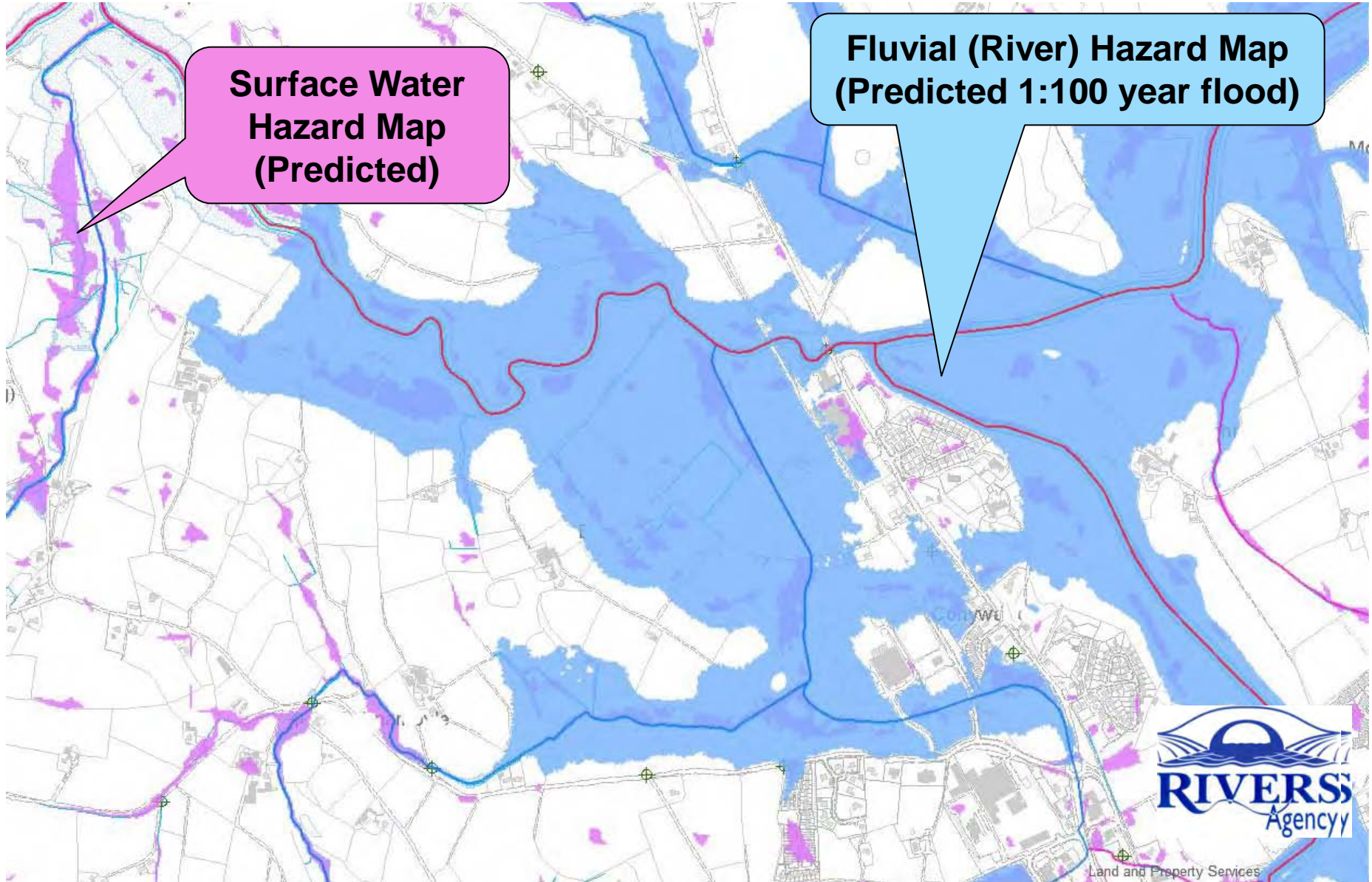
# Rivers Agency Flood Maps - Overview



# Rivers Agency Flood Maps - Detail

**Surface Water Hazard Map  
(Predicted)**

**Fluvial (River) Hazard Map  
(Predicted 1:100 year flood)**



The Rivers Agency Flood Maps are on the Planning Portal and these are used by Planning NI.

The Flood Maps will continue to be available via the Planning Portal when the planning function is transferred to the 11 new Councils.

The Rivers Agency Flood Maps are available to the public and may be viewed on line at:

<http://www.dardni.gov.uk/index/rivers/flood-maps-ni.htm>



[www.dardni.gov.uk](http://www.dardni.gov.uk)

AN ROINN  
Talmhaíochta agus  
Forbartha Tuaithe

MANNYSTRIE O  
Fairms an  
Kintra Fordèrin





### "Indicative" Flood Maps

**Use to locate general areas at risk of flooding**

---

- Present Day
  - Floodplain - Rivers (1% AEP)
  - Floodplain - Sea (0.5% AEP)
  - Surface Water (0.5% AEP)
- Climate Change (2030)
- Historical Flooding



### "Detailed" Flood Hazard Maps

**Use to identify specific properties/sites at risk of flooding**

---

- Significant Flood Risk Areas

Select button to show grid of available maps

- Rivers
  - Flood Hazard Extent (All Probabilities)

Flood Hazard Depth (choice of 3 Probabilities)

- High  Medium  Low

- Coastal Tides
- Surface Water

Zoom to your area of interest. Select the Point Tool below, when it turns green click within a grid tile to open a detailed map.

